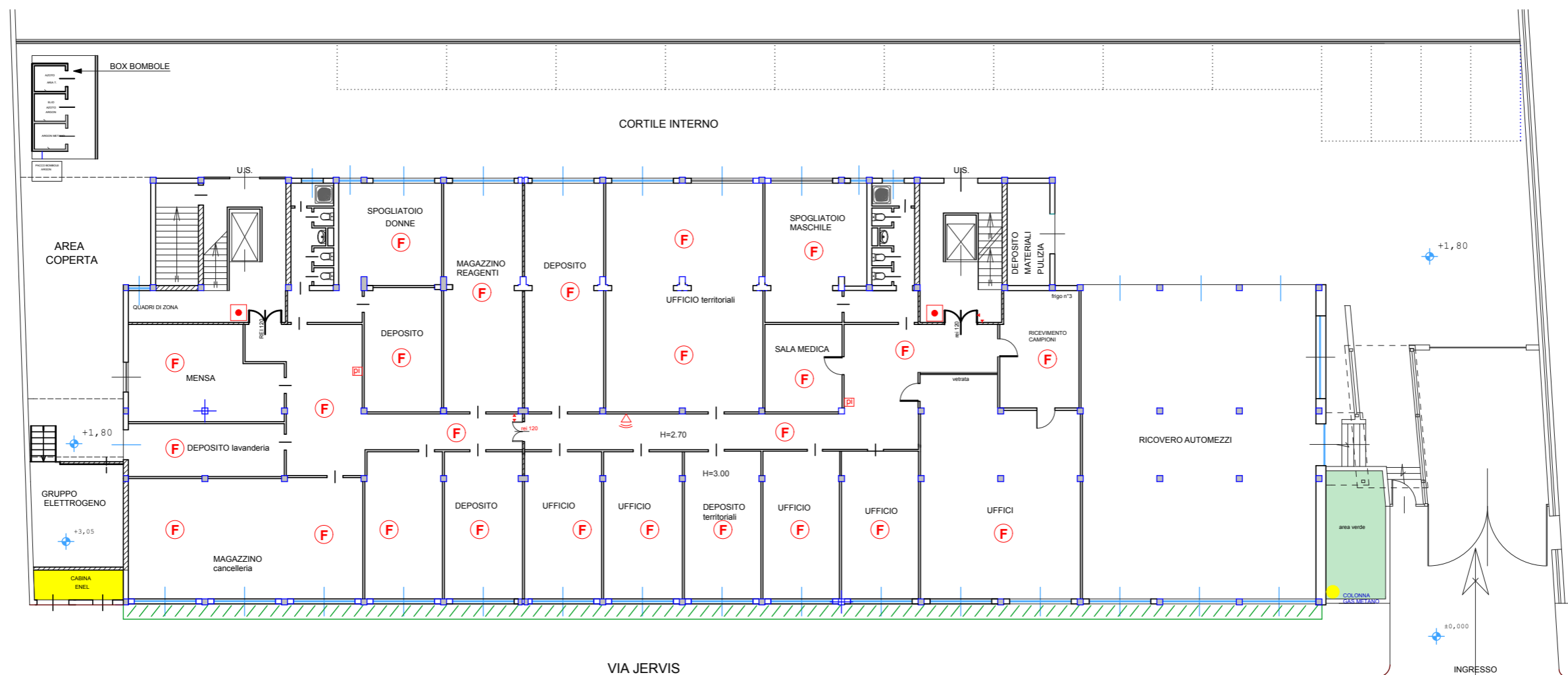






### PIANO TERRA



**LEGENDA**  
dotazione antincendio esistente:

<b>F</b>	RILEVATORE DI FUMO
<b>G</b>	RILEVATORE DI GAS
	SIRENA
	PULSANTE ALLARME
	PANNELLO INCENDIO
	PANNELLO FUGHE GAS
<b>T</b>	ELETROMAGNETI PORTE REI