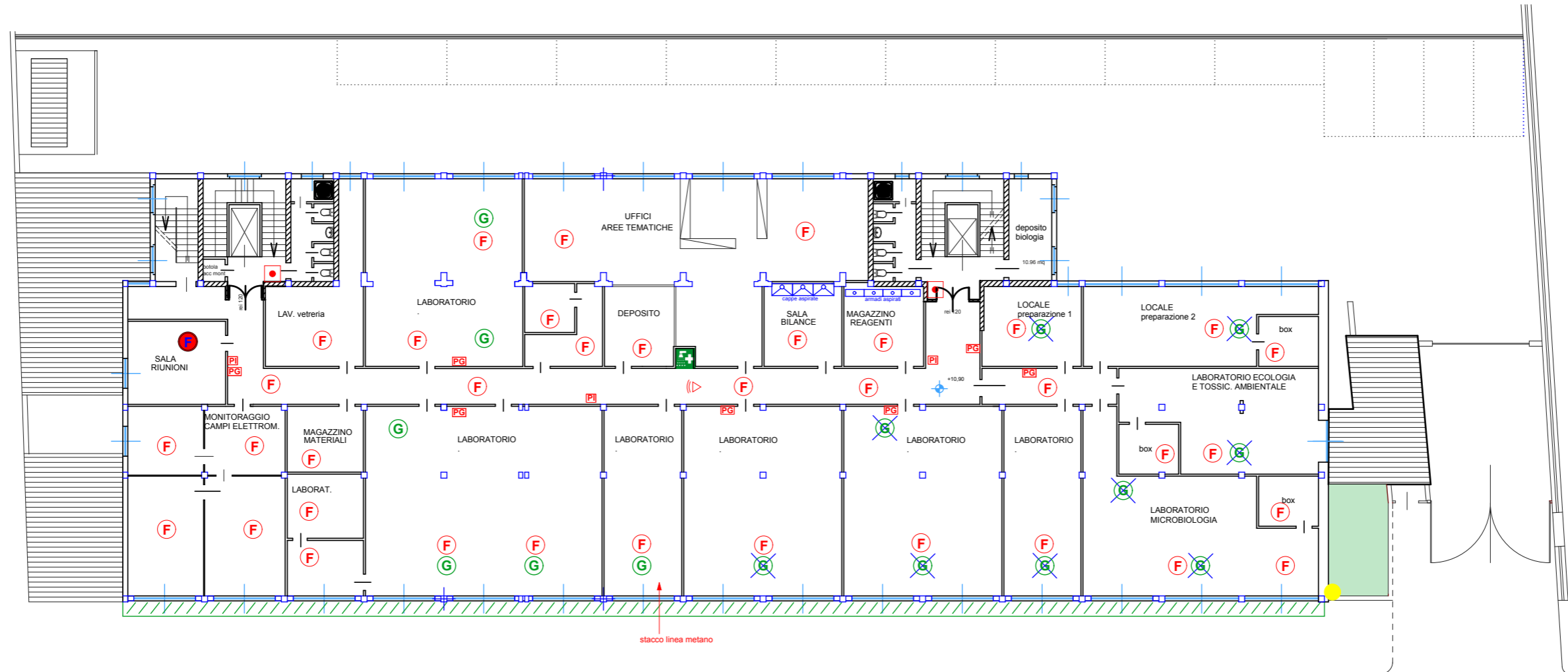










IMPIANTO RIVELAMENTO INCENDI

dipartimento Arpa Ivrea

PIANO SECONDO



LEGENDA	
dotazione antincendio esistente:	
	RILEVATORE DI FUMO
	RILEVATORE DI GAS
	SIRENA
	PULSANTE ALLARME
	PANNELLO INCENDIO
	PANNELLO FUGHE GAS
LEGENDA	
dotazione antincendio da eliminare:	
	RILEVATORE DI GAS
LEGENDA	
dotazione antincendio da aggiungere:	
	RILEVATORE DI FUMO