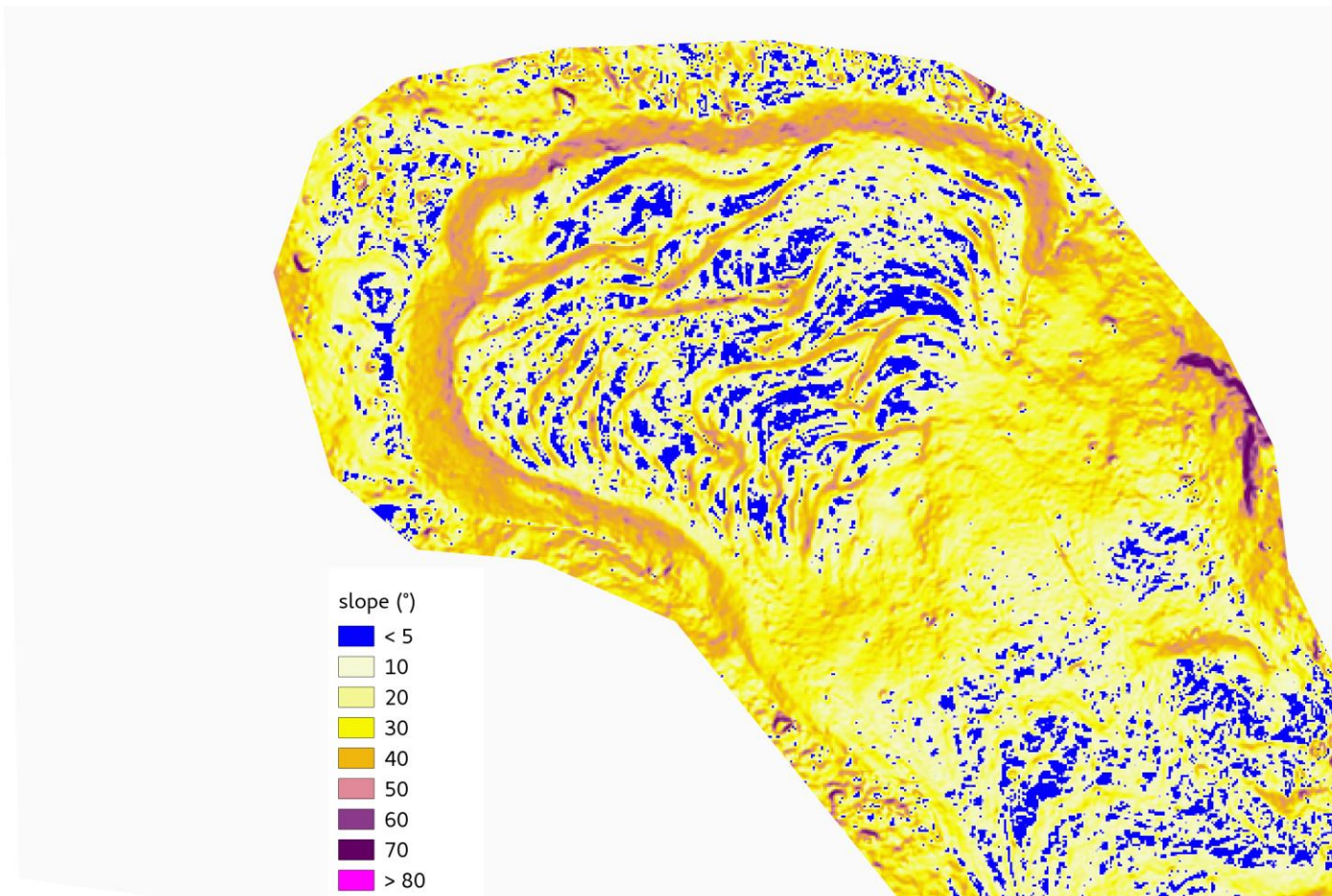


## 4 – Casi studio: rock glacier Monte Granero (Monviso, TO)

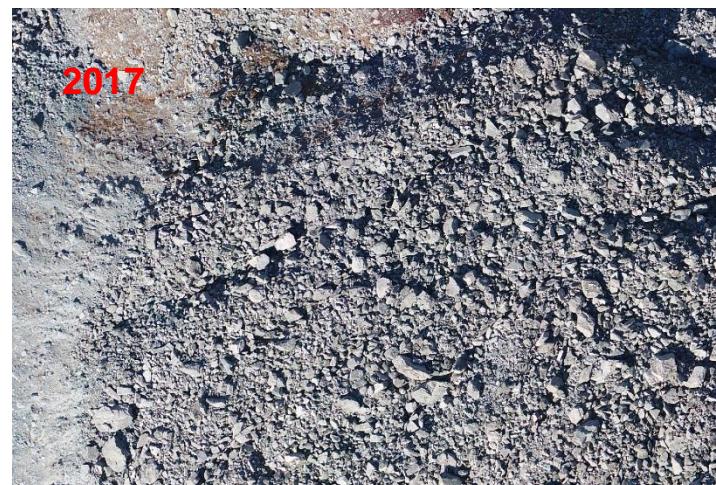
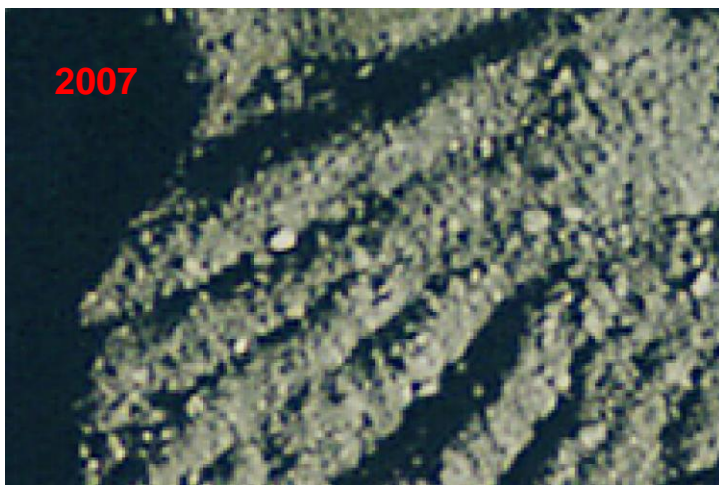
Carta delle pendenze (20171017), flat < 5°





## 4 – Casi studio: rock glacier Monte Granero (Monviso, TO)

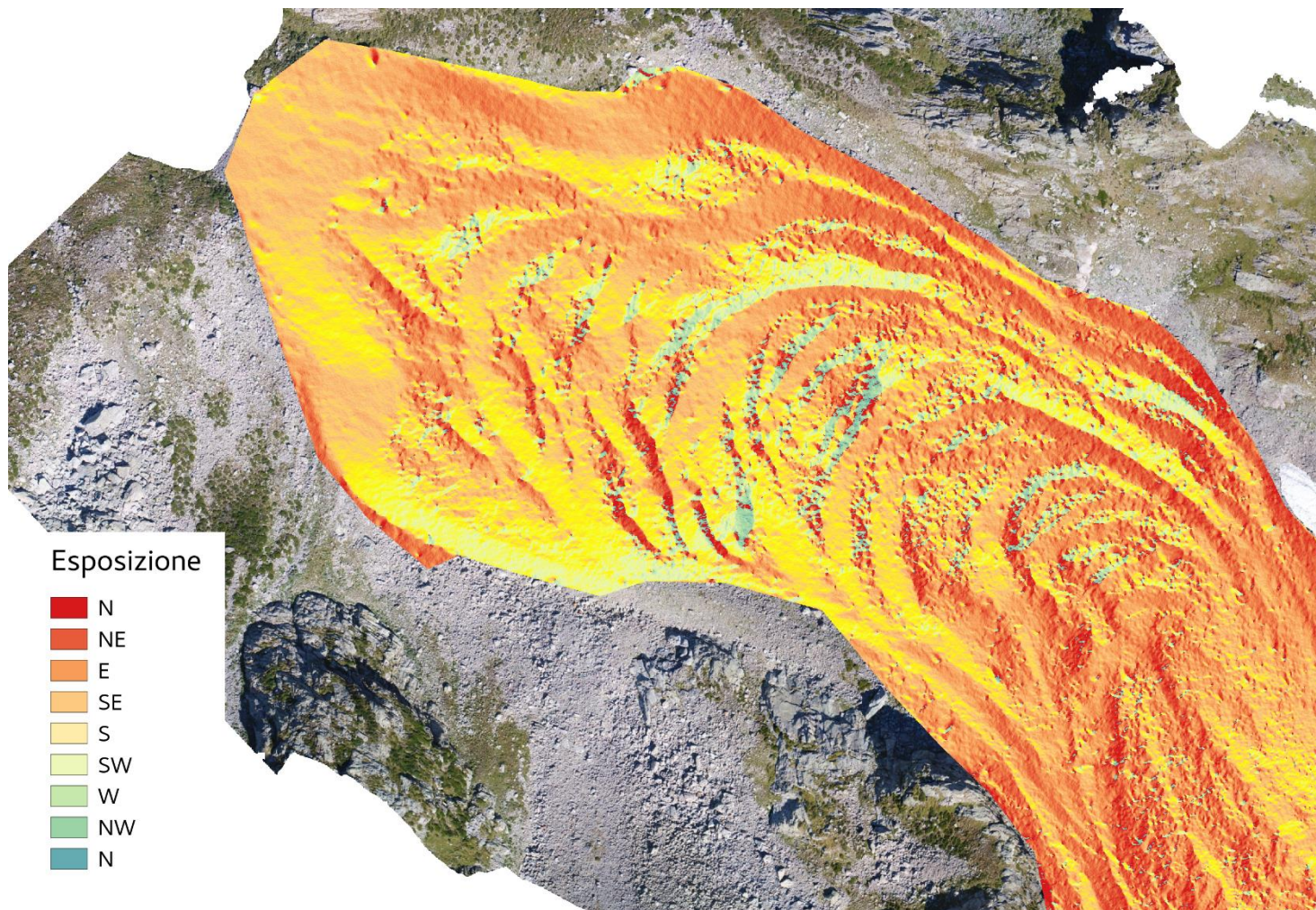
Spostamenti «storici» ???





## 4 – Casi studio: rock glacier Vei del Bouc (CN)

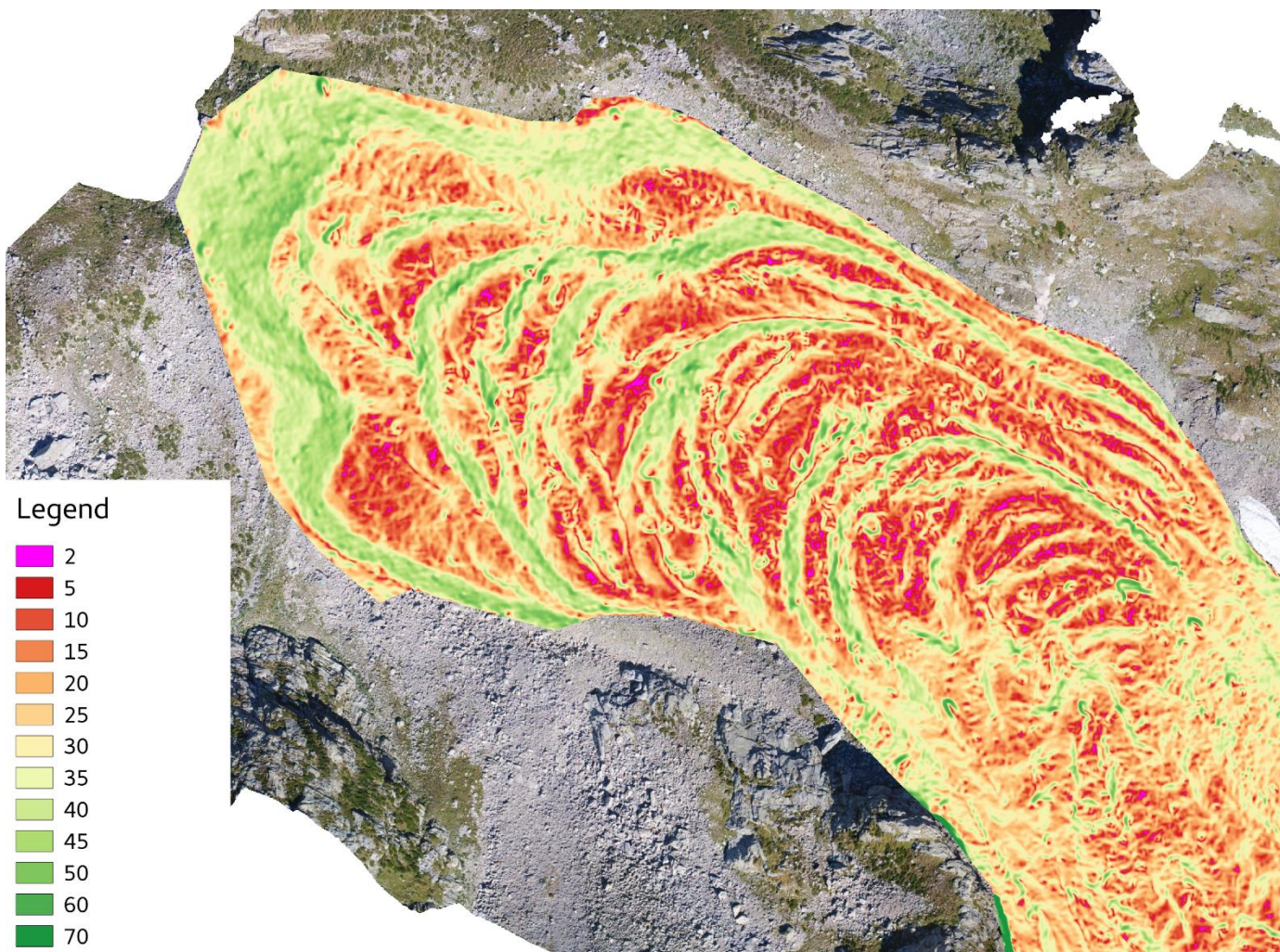
Carta delle esposizioni (GSD 0.1 m)





## 4 – Casi studio: rock glacier Vei del Bouc (CN)

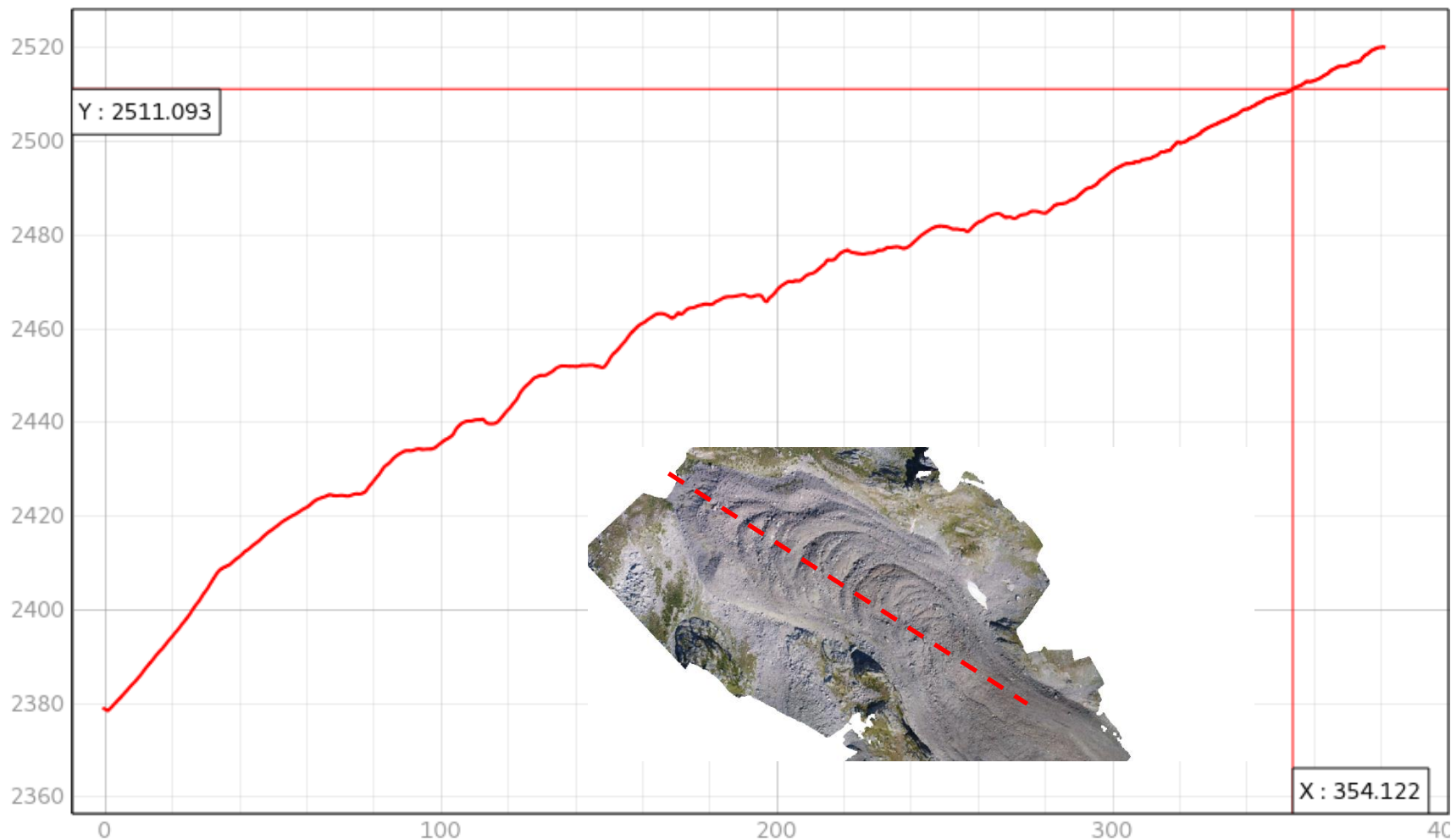
Carta delle pendenze (GSD 0.1 m)



U. Morra di Cella

## 4 – Casi studio: rock glacier Vei del Bouc (CN)

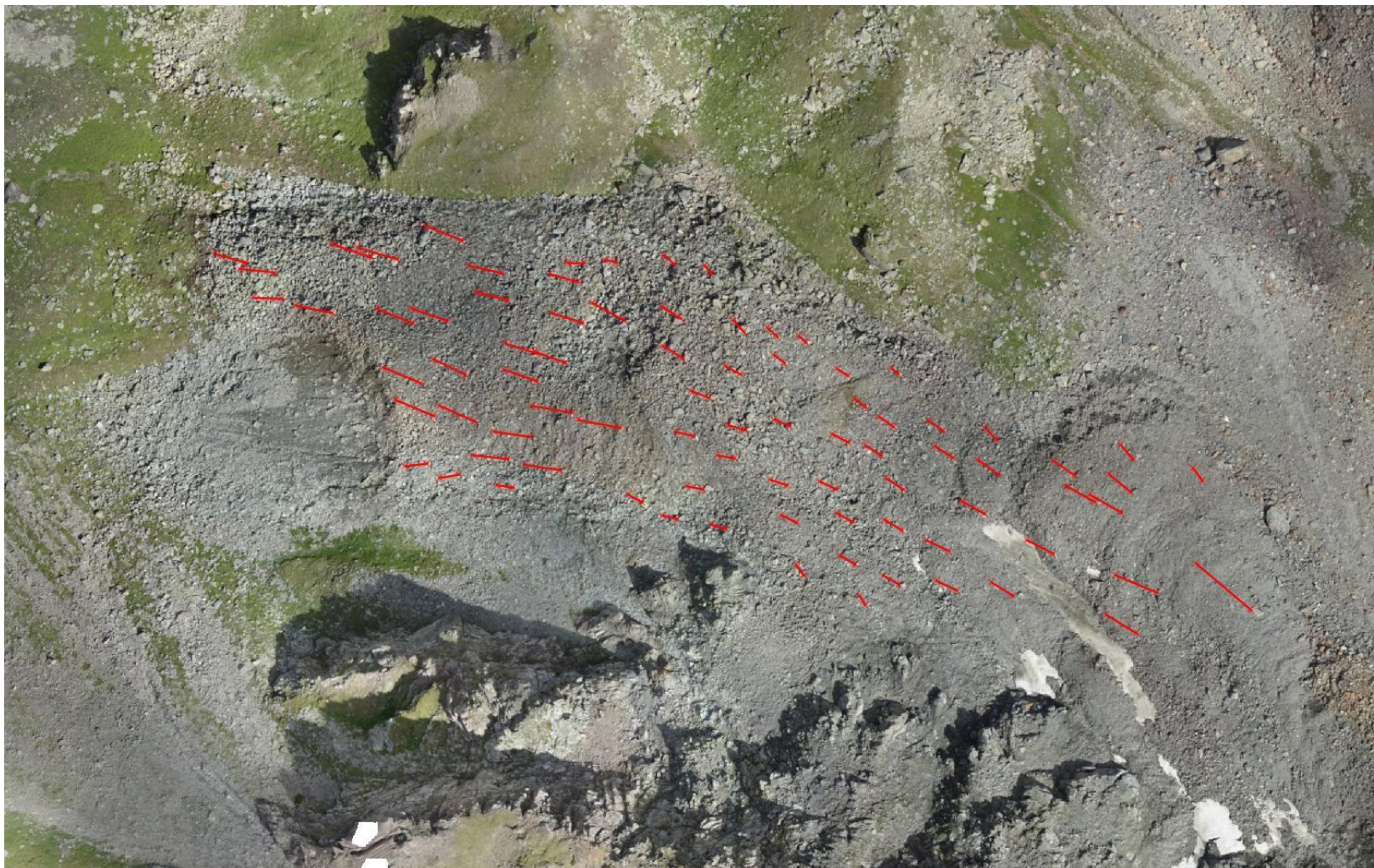
### Profilo longitudinale





## 4 – Casi studio: rock glacier Arpisson (Cogne, AO)

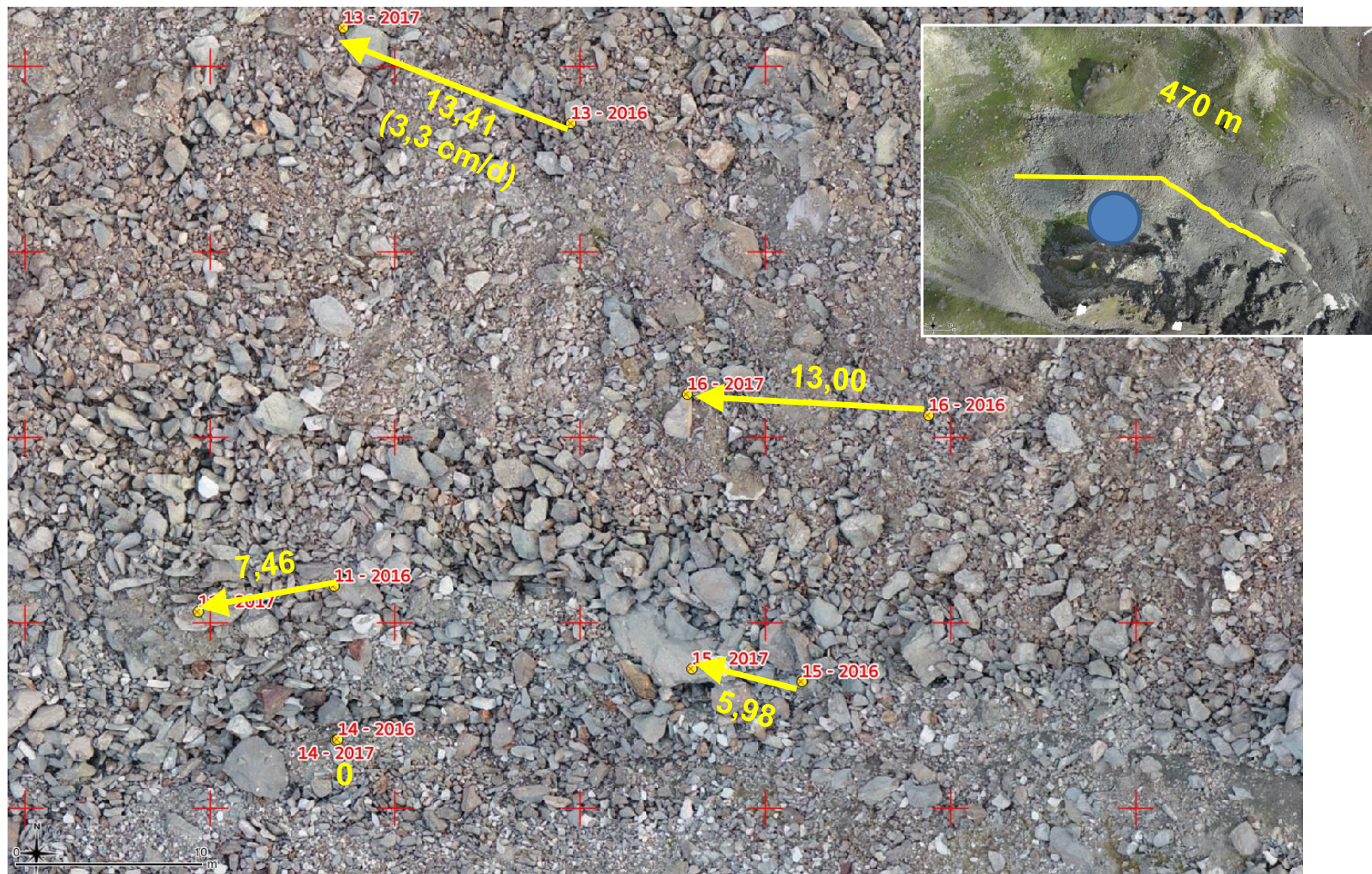
Spostamenti recenti: 20160726 – 20170904 (400 gg)





## 4 – Casi studio: rock glacier Arpisson (Cogne, AO)

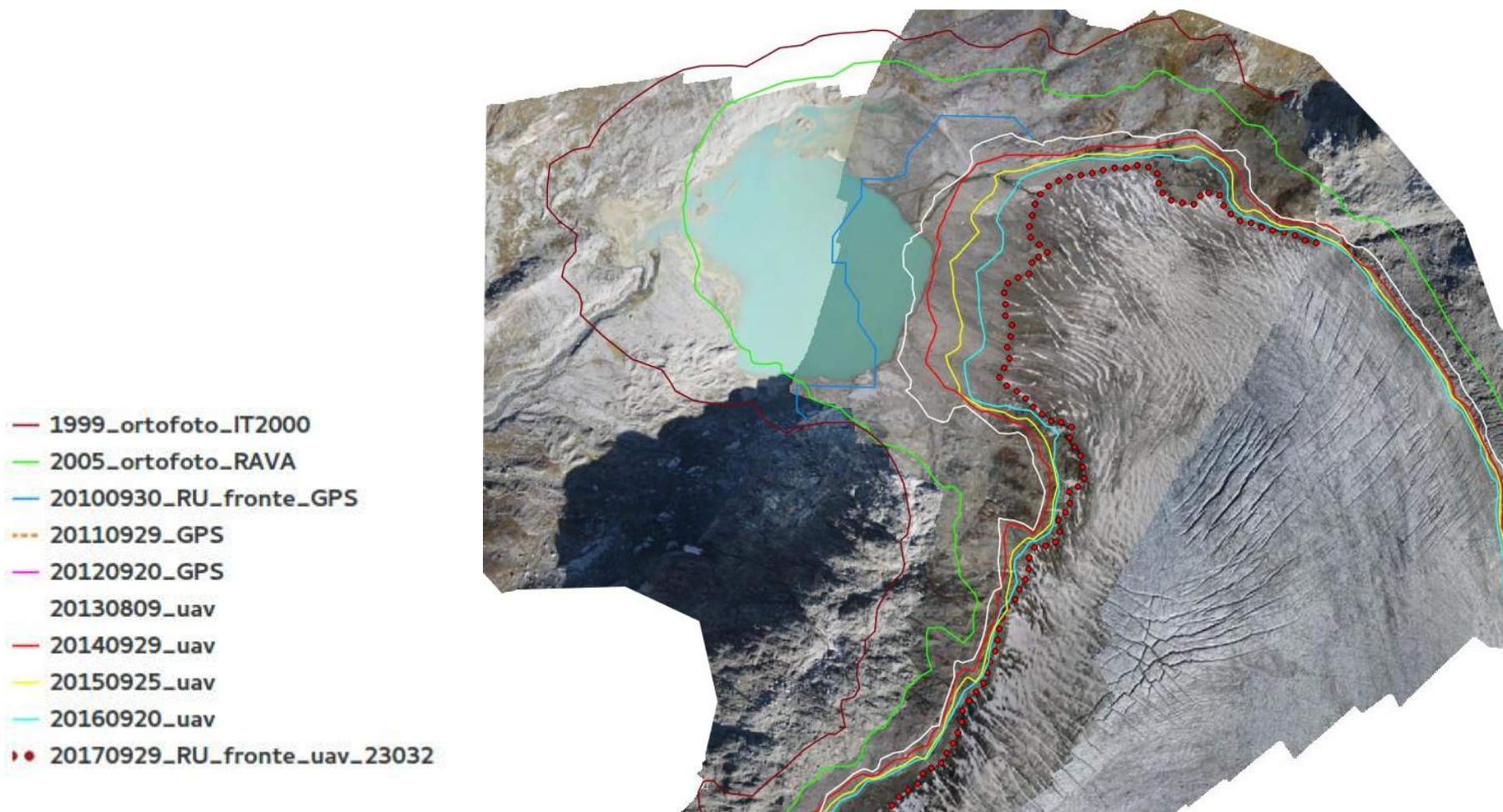
Spostamenti recenti: 20160726 – 20170904 (400 gg)





## 5 – Casi studio: altre applicazioni in ambiente glaciale/periglaciale e 'alpino'

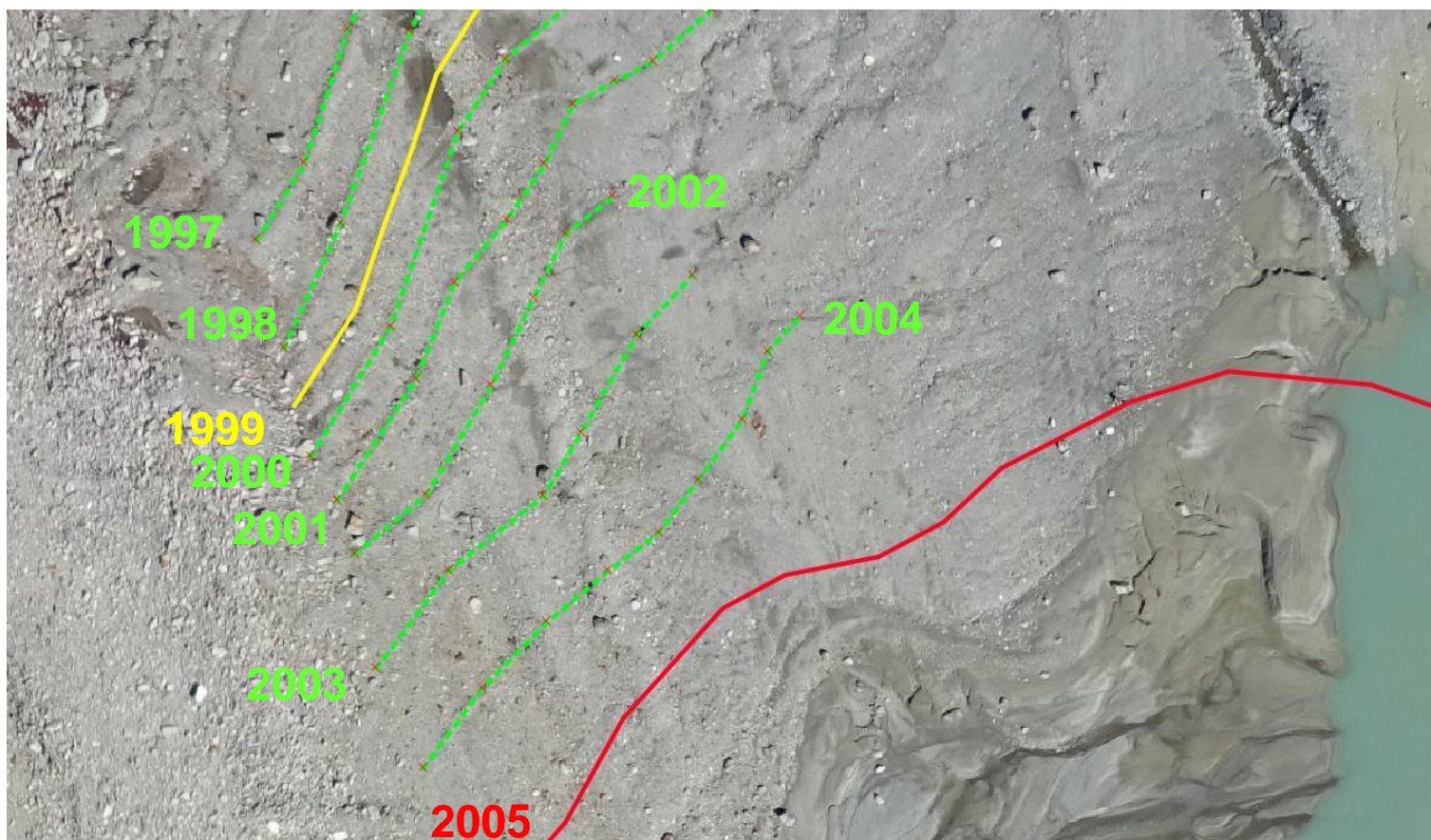
### VARIAZIONI FRONTI GLACIALI





## 5 – Casi studio: altre applicazioni in ambiente glaciale/periglaciale e 'alpino'

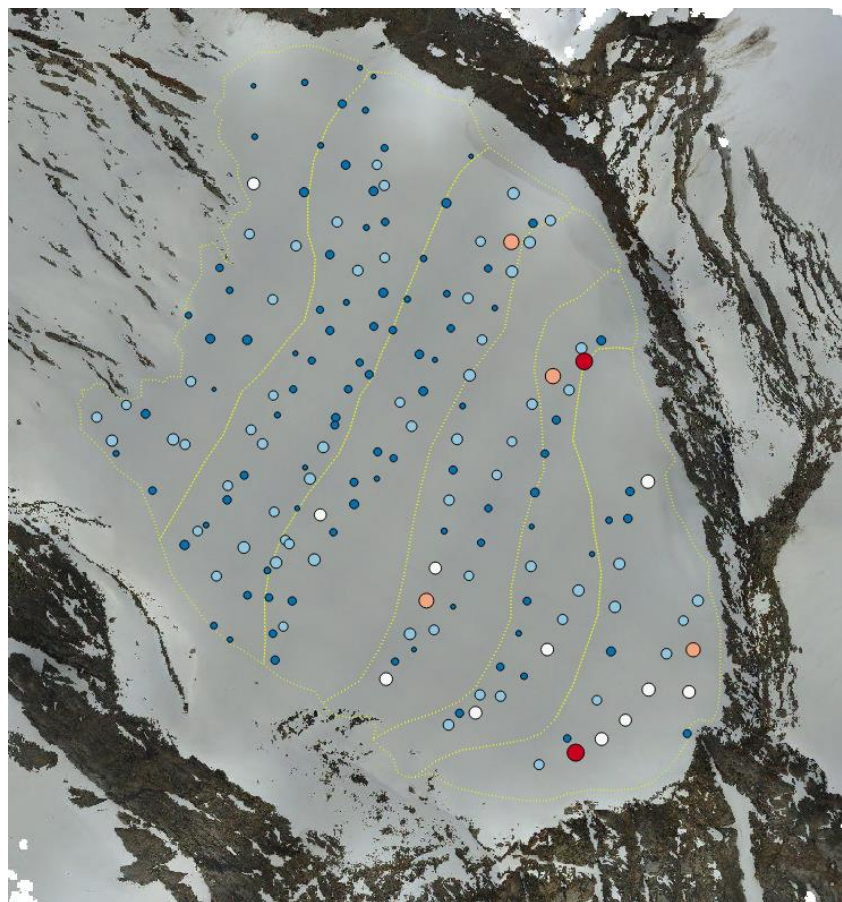
### VARIAZIONI FRONTI GLACIALI (arretramenti annuali!!)



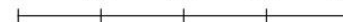


## 5 – Casi studio: altre applicazioni in ambiente glaciale/periglaciale e 'alpino'

### BILANCIO DI MASSA GLACIALE (accumulo & ablazione)



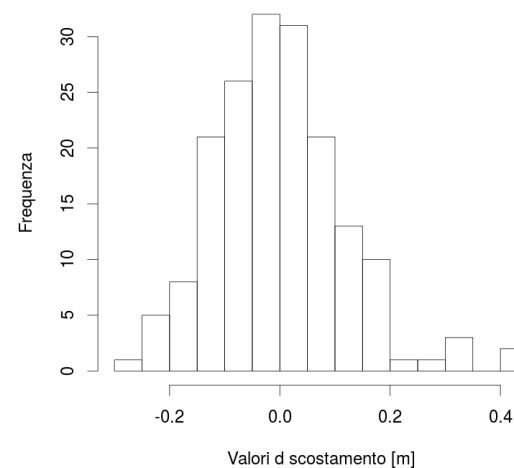
0 100 200 300 400 m



GNSS UAV validazione [175]

- 0.00 - 0.09 [96]
- 0.09 - 0.18 [62]
- 0.18 - 0.27 [11]
- 0.27 - 0.36 [4]
- 0.36 - 0.45 [2]
- Settori di misura

Scostamento GNSS RTK - UAV RTK





## 5 – Casi studio: altre applicazioni in ambiente glaciale/periglaciale e 'alpino'

### DISSESTI IN PARETE (stima volumi e caratterizzazione)

#### Sperone della Brenva (Monte Bianco)

Dense cloud della nicchia di distacco

(02/01/2017)

Coll. Servizio Geologico VDA

(D. Bertolo)





## 5 – Casi studio: altre applicazioni in ambiente glaciale/periglaciale e 'alpino'

### DISSESTI IN PARETE (stima volumi e caratterizzazione)

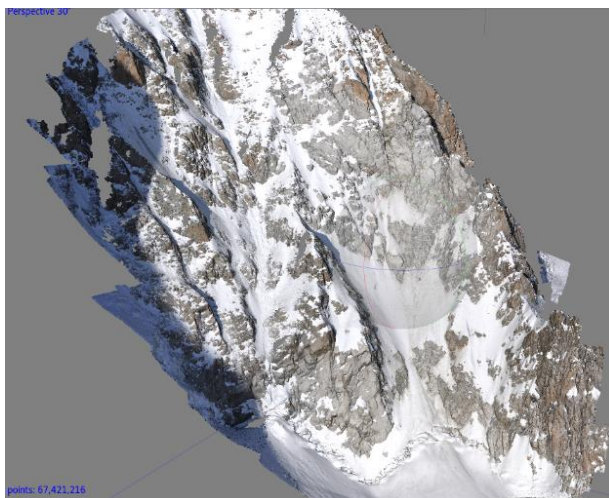
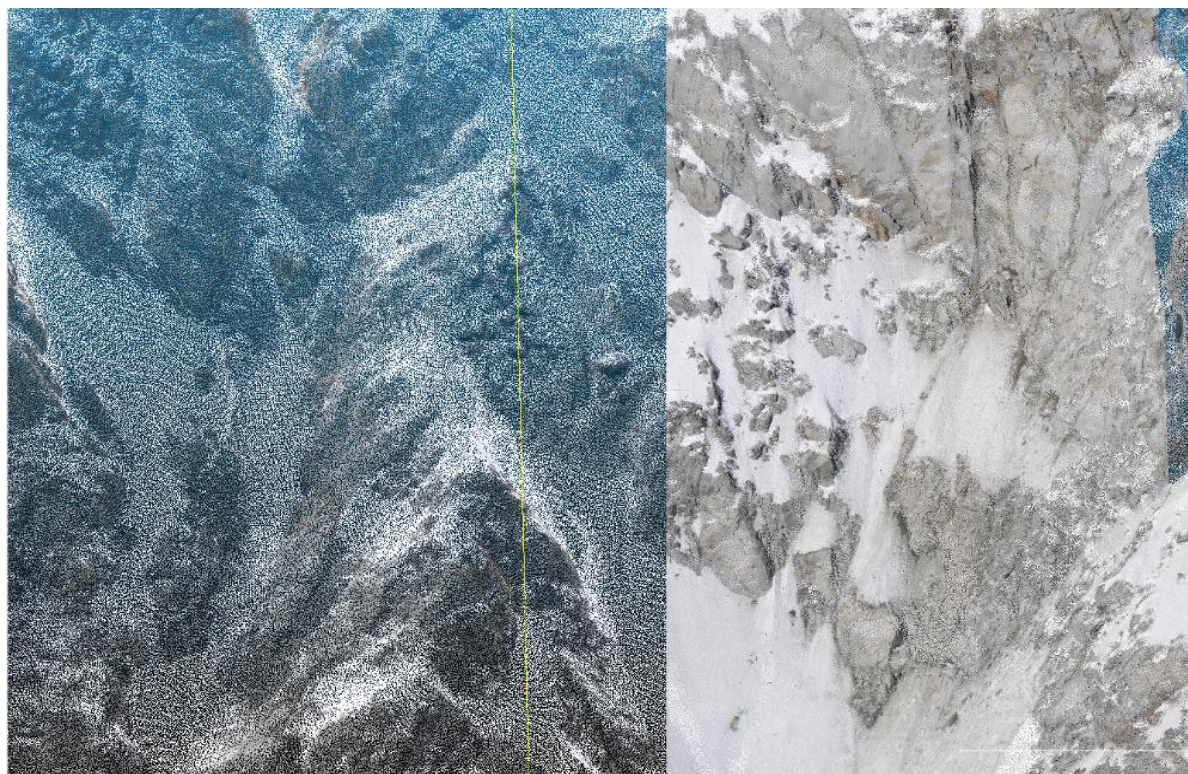
#### Sperone della Brenva (Monte Bianco)

Dense cloud della nicchia di distacco

(02/01/2017)

Coll. Servizio Geologico VDA

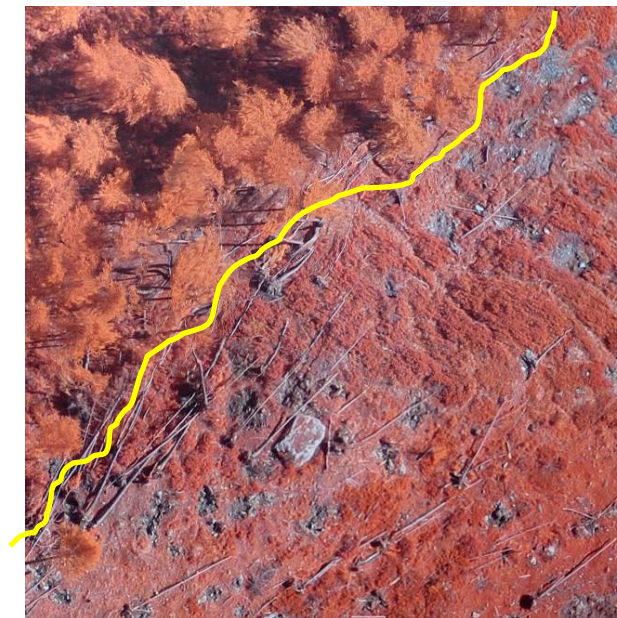
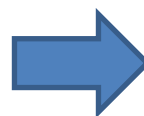
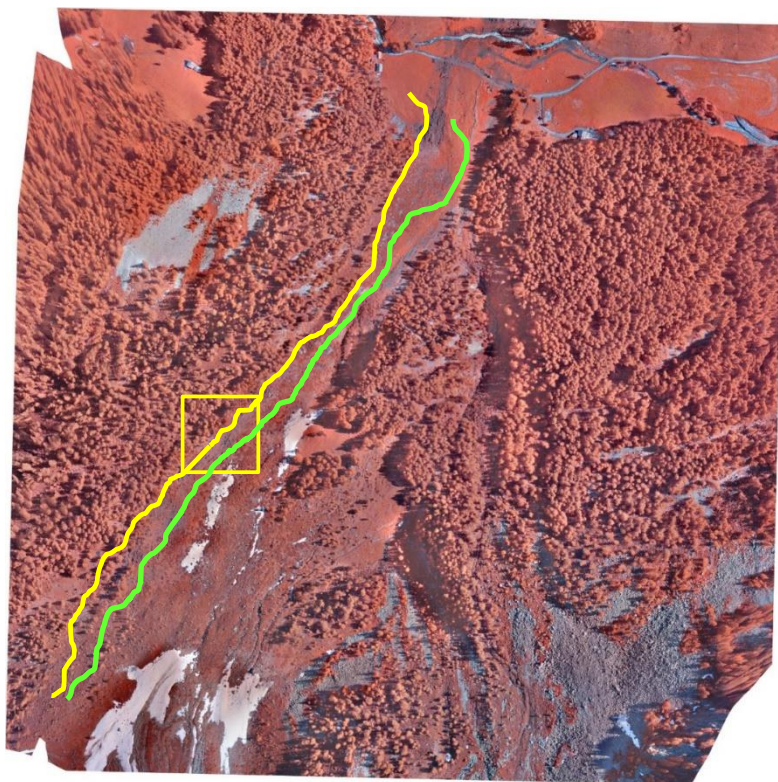
(D. Bertolo)





## 5 – Casi studio: altre applicazioni in ambiente glaciale/periglaciale e 'alpino'

### MAPPATURA VALANGHE (aggiornamento catasto & stima accumuli)

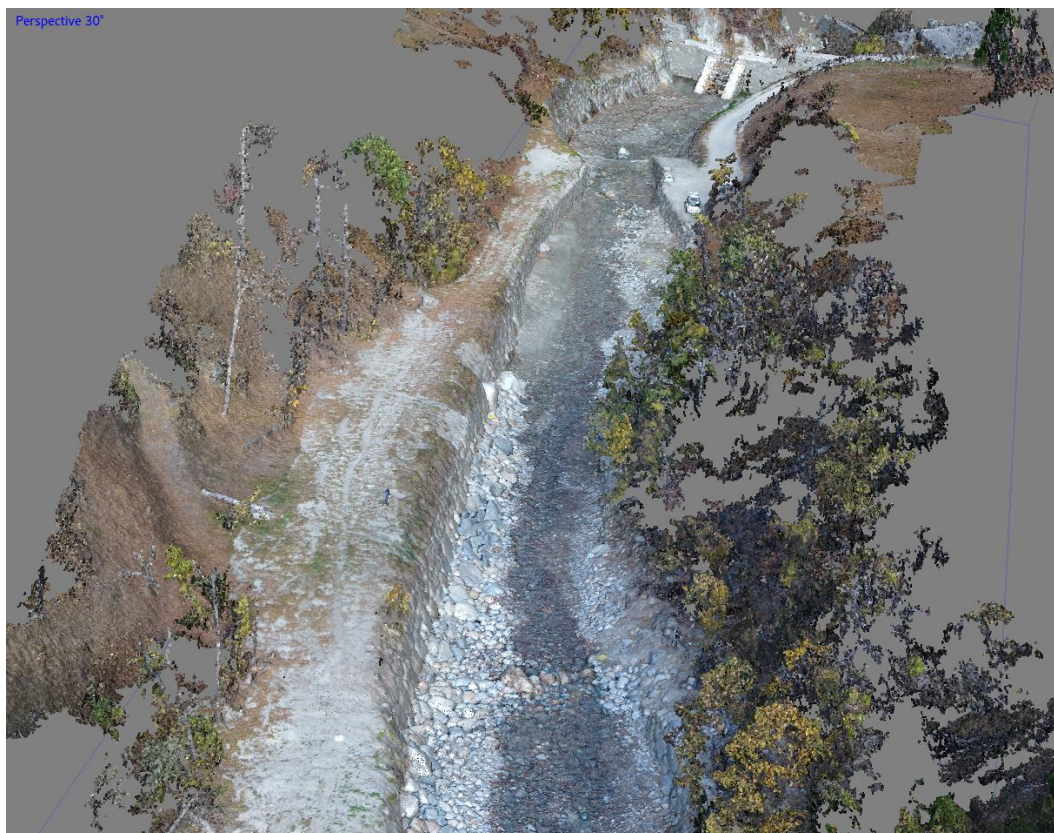


Valanga Saint-Rhémy-en-Bosses – rilievo NIR (aprile 2016)



## 5 – Casi studio: altre applicazioni in ambiente glaciale/periglaciale e 'alpino'

### MONITORAGGIO POST EVENTO (stima volumi depositati/disalveati)



#### Torrente Les Laures (Saint-Marcel, AO)

Rilievo APR a supporto delle attività di ripristino post evento ( agosto 2017)

- Stima volumi depositati ( $\Delta$  DSM)
- Stima dei volumi disalveati ( $\Delta$  DSM)

